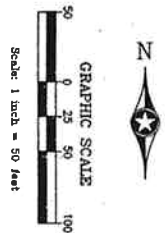
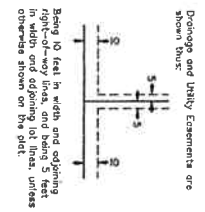
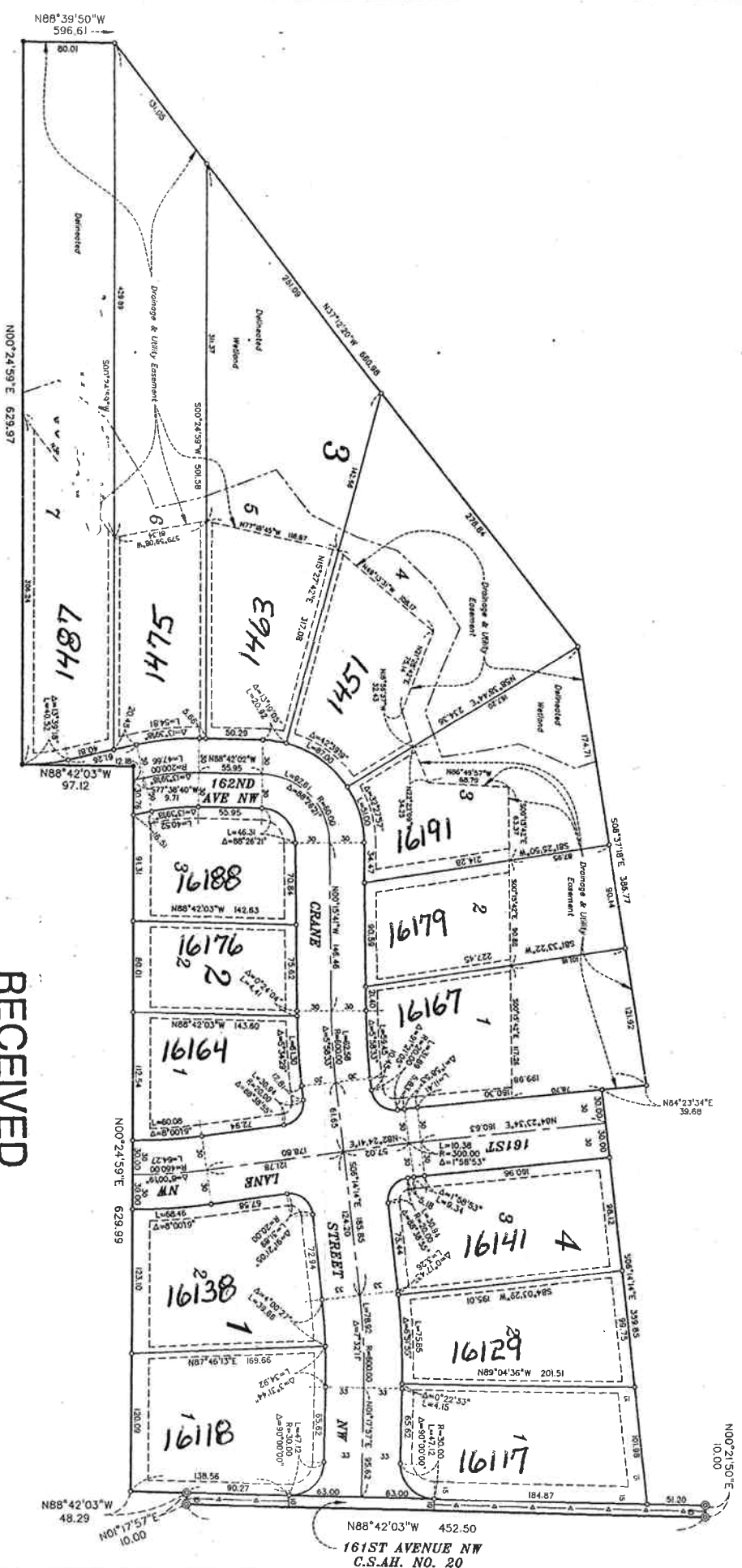


WHITE PINE WILDERNESS INSET

CITY OF ANDOVER,
COUNTY OF ANOKA
SEC. 14, T. 32, R. 24.



RECEIVED
SEP 25 2006
CITY OF ANDOVER

For the purposes of this plat, the South line of the S 1/2 of the NW 1/4 of Sec. 14, Twp. 32, Rng. 24 is returned to bear N88°42'03"W.

- Donors iron pipe set with a plastic plug stamped R.L.S. 42594
- Donors iron monument found
- Donors County Right of Way Monument
- Donors Delineated Wetland
- Donors Access Dedicated to the County of Anoka

John Oliver & Associates, Inc.
SHEET 3 OF 3 SHEETS